

s sat	t tap	p pan	n nose	m mat	a ant	e egg	i ink	o otter
g goat	d dog	ck click	r run	h hat	u up	ai rain	ee knee	igh light
b bus	f farm	l lolly	j jam	v van	oa boat	oo cook	oo boot	ar star
w wish	x axe	y yell	z zap	qu quill	or fork	ur burn	ow now	oi boil
ch chin	sh ship	th think	th the	ng sing	ear near	air stair	ure sure	er writer

YEAR 1 PHONICS SCREENING 2024

What is phonics?



Phonics is the relationship between the print and the sounds.

The brain can hold limited pieces of information in its short-term memory.

There are many critics of phonics instruction. This is not upheld by the research.

Synthetic phonics



Grapheme/phoneme
correspondence.

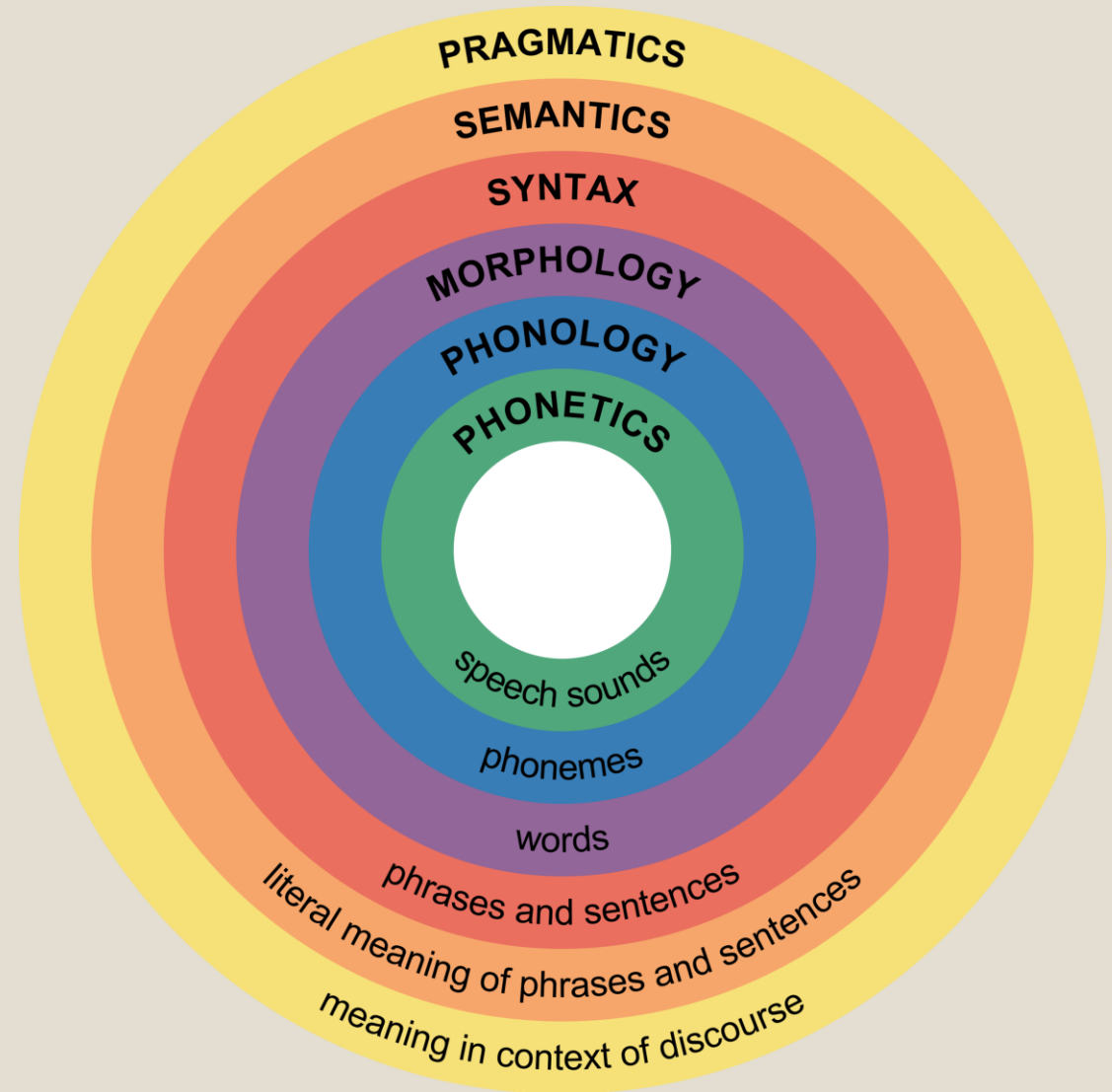


Blending to read
words



Segmenting to spell
words.

Phonics is only one aspect of reading.



When will the test be?



[This Photo](#) by Unknown Author is licensed under [CC BY](#)

The week beginning 10th June 2024.

Children can be tested until 21st June 2024.

The test

40 words.

Individually with teacher

Approximately 10 minutes.

20 real and 20 pseudo words (alien words).

chop

sing

dart

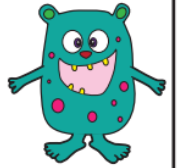
shock

Pseudo Words (alien words)

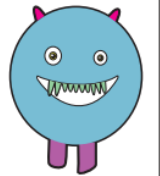
The pseudo or alien words.

Pseudo words do not favour children who have a good vocabulary or visual memory of words.

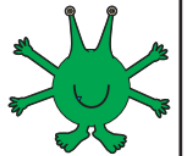
skap



blorn



meft



veems



Sound buttons

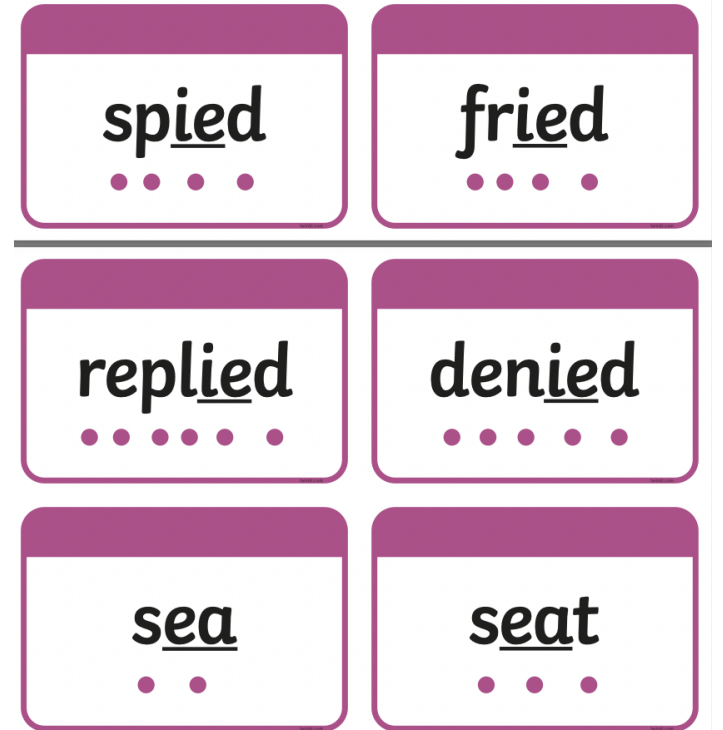
We blend graphemes in words to read.

Sound buttons are used to mark graphemes.

They support blending.

During the test, children can add sound buttons.

They will then need to blend the sounds together and say the word independently.



How can I help my child?

- Read as much as possible with your child
- Support them to sound out and blend words together.
- Ask them to spot the 'digraphs/trigraphs' first.
- Encourage them to add sound buttons.
- Use resources that are sent home with your child.



Reporting to Parents

By the end of the summer term all schools must report each child's results to their parents.

